



presents:

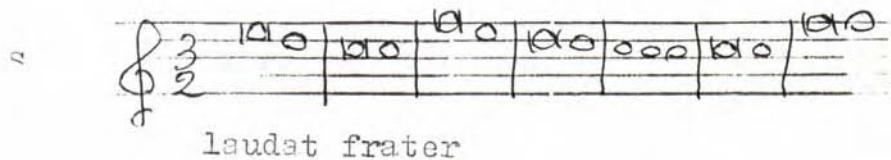
A step-by-step guide to cataloging **parts** in



This guide will show you how to enter a source if you only have **parts**.

Let's use this card:

ANONIMO I-Bsf, M.A.II.6
[Inno, Decus umorum, 3 v., coro, Do]
Inno
MS, fine 18 sec., parti, 24x17,5 cm.
7 parti: S, A, T (soli), S, A, T, B (coro)
1, 2, 1, 4, 4, 4, 4 f.



ANONIMO [Inno, Decus umorum, 3 v., coro, Do]
I-Bsf, M.A.II.6

The required fields are similar to the required fields when you have only a score.

The difference is we have 7 parts: 3 solo voices and 4 chorus voices.

To catalog this source, these are the fields you need at a minimum:



Library information and relations

- Library siglum and shelfmark (852)

People and institutions

- Composer (100)

Title and content description

- Title on source (245)
- Standardized title, scoring summary, key (240)
- Subject heading (650)
- Scoring (594)
- Language (041)

Material description

- Source type (593)
- Date (260)
- Physical description (300)
- Parts held and extent (590)

Incipits (031)

- Tempo
- Music incipits
- Text incipits

References and notes

Administration

Fill out all of the sections the same as for scores, except for the **Material description**.

If you haven't viewed the guide for scores yet, take a look at it now!

www.rism.info/en/community/muscat.html

OK? Now let's catalog our parts!

Material description (1/2)


Source type (593): Select one from the list (same as for scores)

Publishing, Printing, and Production Information --> Date (260):

- Enter the dating of this manuscript (end of the 18th century) according to RISM conventions (same as for scores)

Physical description (300): Enter **7 parts** and the dimensions

ANONIMO I-Bsf, M.A.II.6
[Inno, Decus umorum, 3 v., coro, Do]
Inno
MS, fine 18 sec., parti, 24x17,5 cm.
7 parti: S, A, T (soli), S, A, T, B (coro)
1, 2, 1, 4, 4, 4, 4 f.

PHYSICAL DESCRIPTION (300) ? +  ▼

Format, extent + 7 parts

Dimensions 24 x 17.5 cm

Material description (2/2)

Parts held and extent (590): You have two options:

- Each instrumental group on a separate line
- All parts on one line, instrumental groups separated by semicolon

Do whichever you prefer!

```
ANONIMO I-Bsf, M.A.II.6  
[Inno, Decus umorum, 3 v., coro, Do]  
Inno  
MS, fine 18 sec., parti, 24x17,5 cm.  
7 parti: S, A, T (soli), S, A, T, B (coro)  
1, 2, 1, 4, 4, 4, 4 f.
```

Option 1:

PARTS HELD AND EXTENT (590)		?	+	🗑️	▼
Parts held	Solo: S, A, T				⋮
Extent (parts)	1, 2, 1 f.				⋮
<hr/>					
PARTS HELD AND EXTENT (590)		?	+	🗑️	▼
Parts held	<u>Coro</u> : S, A, T, B				⋮
Extent (parts)	4, 4, 4, 4 f				⋮

Option 2:

PARTS HELD AND EXTENT (590)		?	+	🗑️	▼
Parts held	Solo: S, A, T, <u>Coro</u> : S, A, T, B				⋮
Extent (parts)	1, 2, 1, 4, 4, 4, 4 f.				⋮

Summary: Scores vs. Parts All sections are the same except for **Material description**.

In the field **Material description**, fill out:

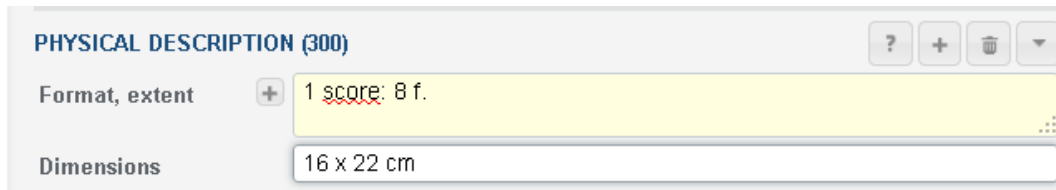
If you have a score:

Source type (593)

Date (260)

Physical description (300)

- **Format, extent**
- **Dimensions**



PHYSICAL DESCRIPTION (300)

Format, extent + 1 score: 8 f.

Dimensions 16 x 22 cm

If you have a part:

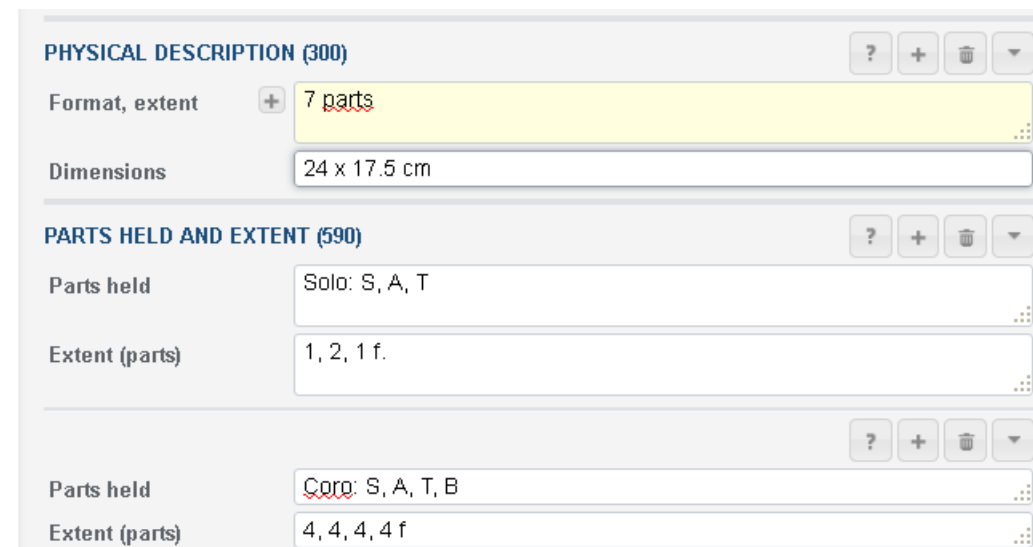
Source type (593)

Date (260)

Physical description (300)

- **Format only**
- **Dimensions**

Parts held and extent (590)



PHYSICAL DESCRIPTION (300)

Format, extent + 7 parts

Dimensions 24 x 17.5 cm

PARTS HELD AND EXTENT (590)

Parts held Solo: S, A, T

Extent (parts) 1, 2, 1 f.

Parts held Coro: S, A, T, B

Extent (parts) 4, 4, 4, 4 f